

Harpers Valley Resort

12 South St. Kimberling City, MO 65686
 417-739-2789 ~ 800-688-2193
 harpervalleyresort@hotmail.com
 www.harpervalley.com
 Your Hosts: Basil and Nancy Ellis
OPEN ALL YEAR!

INFO AND RATES FOR 2010

Harpers Valley Resort is located lakefront in a quiet cove called Fisher Creek on Table Rock Lake. Only 1/2 mile off HWY 13 on all paved roads. Just minutes away from Kimberling City Shopping Center, post office, several churches, restaurants and area story telling theater. We are only 8 miles from Silver Dollar City and 13 miles from all the fun shopping and music shows of Branson.

At a closer look we have just a 1/2 mile from a 9 hole golf course and just 7 miles from Stonebridge, one of the top 10 courses in Missouri. Just down our cove are 2 restaurants you can dock up to and run in for a bite to eat and with a full service marina just around the corner you'll have everything you need.

We are on a quiet dead end with no traffic past our resort by car or boat. Our facilities include a 22'X44" pool with pool side deck with tables, chairs, lounge chairs, pavilion with tables, ice, grill with serving area and plenty of sun or shade for relaxing.

For the kids we are a park like setting with plenty of room to run and play, ride bikes and play area with tetherball and other yard games.

For the boater we have concrete boat launch, covered and lighted dock with ele. hookup and fish cleaning station. Also ele hookup outside cabins.

You're sure to enjoy our fire pit for late night fun and hammock for a relaxing siesta.

800-688-2193

Reservations/Pre-payment? Refunds

A prepayment is required for all reservations. Late arrivals and early departures will be charged for all days reserved. Since all of our business depends on reservations, we have a 30 day cancellation policy for a full refund. Anything less than 30 days we will refund your deposit after we fill your reservation in full minus a \$25.00 cancellation fee.

Balance due on arrival with cash, personal check, travelers check, Master Card or Visa.

Groups of 3 or more cabins must be paid in full 30 days before arrival date.

If paying in cash we are giving a cash discount!

Check-In/Check-Out - Check in time is after 3 pm to 10 pm. If you will not be arriving during these hours please let us know. We can arrange to leave a key in your unit.

Extra Persons—All units are based on a 4 person rate. Each additional person will be charged \$7.00 per day.

SORRY NO PETS ALLOWED

Facilities and Accommodations

Efficiency units 9—12 all have AC/heat, ceiling fan, carpet, 19" TV/DVD player, kitchenette, 2 burner stove top, coffee maker/filters toaster, microwave, cookware, dishes, flatware, dish soap, kitchen and bath towels, linens, bath/hand soap, toilet paper and trash bags. Units have a small patio overlooking the lake with deck chairs and table. Grills are adjacent to cabins with picnic tables.

Deluxe Units #3, 7 and 8 have 27" TV/DVD player in living room and 19" TV in master bedroom, blender and crock pot, iron and ironing board.

Basic 2 bedroom and Deluxe units 1—8 all have AC/Heat, ceiling fans with carpeting throughout, 19" color TV/DVD player, full kitchens with full size stove and frig, coffee pot/filters, toaster, microwave, cookware, dishes, flatware, dish soap, kitchen and bath towels, linens, bath & hand soaps, toilet paper and trash bags. Each unit has deck with chairs and a grill outside cabin.

PLEASE PROVIDE YOUR OWN POOL/LAKE TOWEL

RATES FOR 2010

Room Type	# of people	Summer and Holiday Season	Mid Season	Off Season	
DLX 3-7-8	4 Max 7	\$115.00 A night	\$805 Wkly	\$95.00 ntly	\$71.00 ntly
Basic poolside 1+2	4 Max 6	\$105.00 A night	\$735 wkly	\$87.00 ntly	\$66.00 ntly
Basic lakefront 4-5-6	4 Max 6	\$105.00 A night	\$735 wkly	\$87.00 ntly	\$66.00 ntly
Eff. rooms 9-10-11 and 12	4 Max 4	\$73.00 A night	\$511 wkly	\$62.00 ntly	\$46.00 ntly

Rates based on 4 people. Each additional person over 4 is \$7.00 per day extra.

Rentals

Boat slip.....\$8.00 per day
 20 ft pontoon.....\$150.00 full day
\$90.00 4 hours
\$800.00 wkly

Gas extra on boat rental.

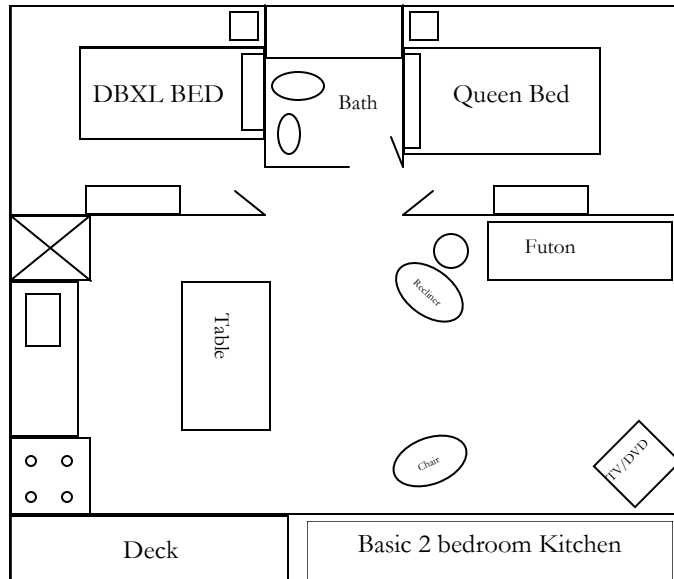
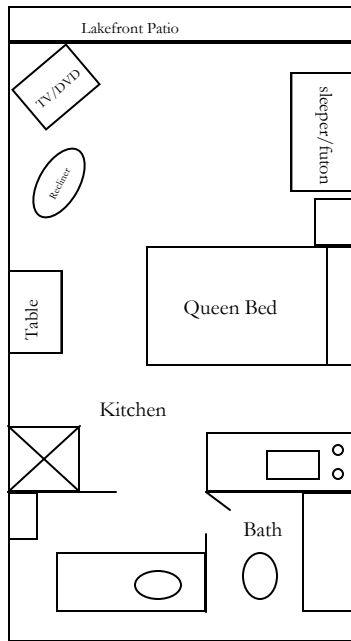
**CALL 800-688-2193 TODAY
 TO MAKE YOUR RESERVATIONS
 OR MAKE THEM ONLINE
 BY GOING TO
 WWW.HARPERVALLEY.COM**

Harpers' Valley Resort

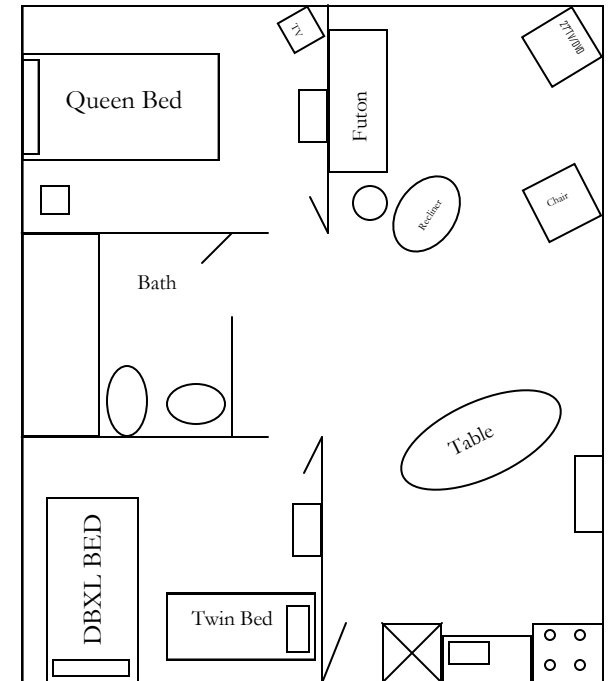
A park like setting that is lake front on Table Rock Lake

A great place for family vacations, fishermen, reunions and group, corporate or couples retreats

Lakefront
Efficiency Units
9-10-11-12
Sleeps 4 max



Basic 2 bedroom Kitchen
Units 1- 2 are pool front
Units 4-5-6 are lakefront
Sleeps 6 max



Deluxe 2 bedroom Kitchen
Lakefront—Units 3-7-8
Sleeps 7 max

2010 Dates for rates

Off Season
Jan 1 - May 27 and Sep 7 - Dec 31

Mid Season
June 1- June 11 and Aug 15 - Sep 2

Summer and Holiday
May 28-29-30-31
June 12 - Aug 14
Sept 3-4-5-6

